



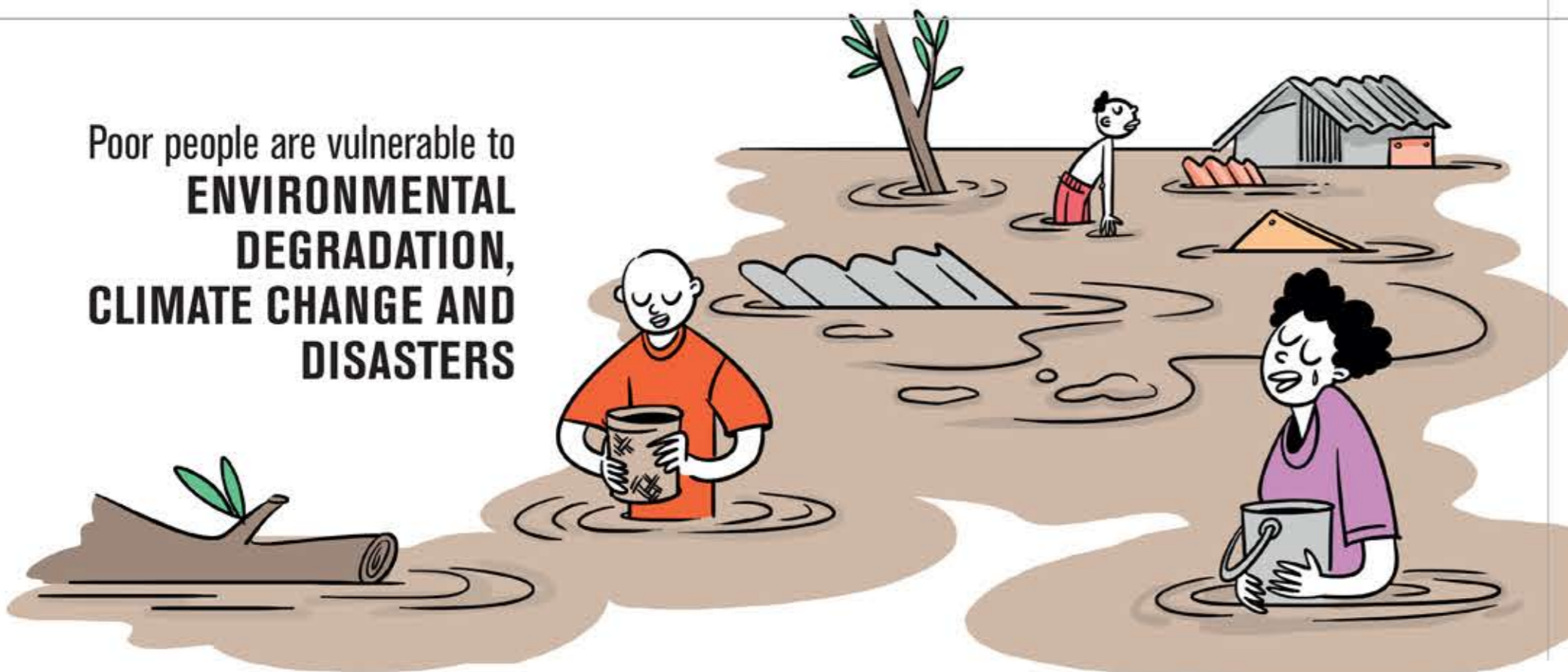
Challenges

836 MILLION
people still live in
EXTREME POVERTY



The poor strongly rely on
NATURAL RESOURCES
for their livelihoods

Poor people are vulnerable to
**ENVIRONMENTAL
DEGRADATION,
CLIMATE CHANGE AND
DISASTERS**



Solutions

**BUILD
RESILIENCE** of poor
people so that they can
live a dignified life



Promote
**LIVELIHOOD
DIVERSIFICATION**

ADAPT TO CLIMATE CHANGE
and **REDUCE RISKS** of disasters
and shocks





Challenges

We live in a world where **1 IN 9 PEOPLE IS UNDERNOURISHED**



Solutions

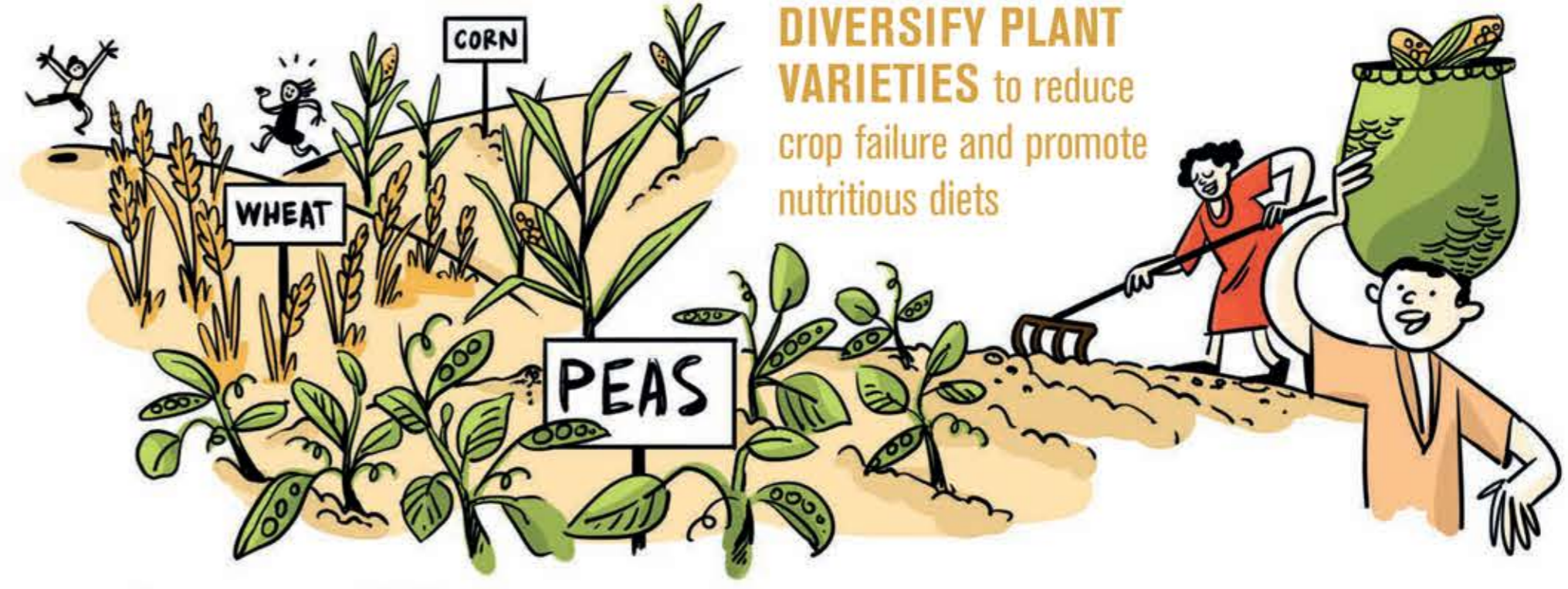
INCREASE AGRICULTURAL PRODUCTIVITY and **ENSURE EQUITABLE ACCESS** to food for all



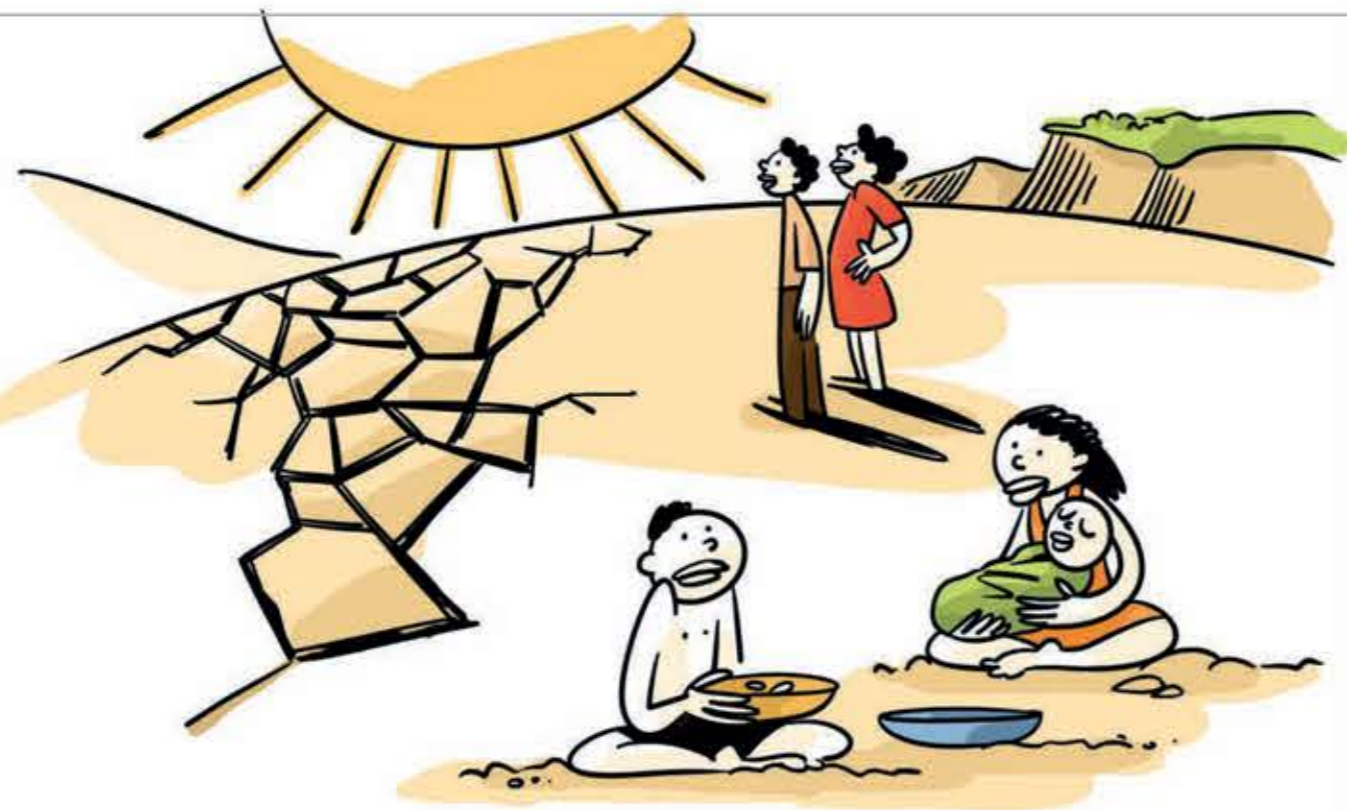
75% of crop diversity has been lost to **MONOCROP CULTURE** making crop more **VULNERABLE TO PEST OUTBREAKS AND DISEASES**



DIVERSIFY PLANT VARIETIES to reduce crop failure and promote nutritious diets



SMALLHOLDER FARMERS provide 80% of the food consumed in the developing world. Mostly rainfed their agriculture is particularly **VULNERABLE TO DROUGHTS AND FLOODS**



INVEST IN SMALLHOLDER FARMERS especially **WOMEN** to increase food security and improve nutrition for the poorest





Challenges

Solutions

ENVIRONMENTAL FACTORS KILL MILLIONS OF PEOPLE

every year causing nearly one quarter of all deaths worldwide



AVOID AND REDUCE POLLUTION to prevent millions of premature deaths every year

POLLUTION, CHEMICAL EXPOSURE, CLIMATE CHANGE, and ULTRAVIOLET RADIATION contribute to more than **100 DISEASES** affecting primarily young children and elder people



Work with energy, transport, agriculture and industry sectors to **CREATE A HEALTHIER ENVIRONMENT**

AIR POLLUTION is the world's largest environmental health risk killing 6.5 million people prematurely every year



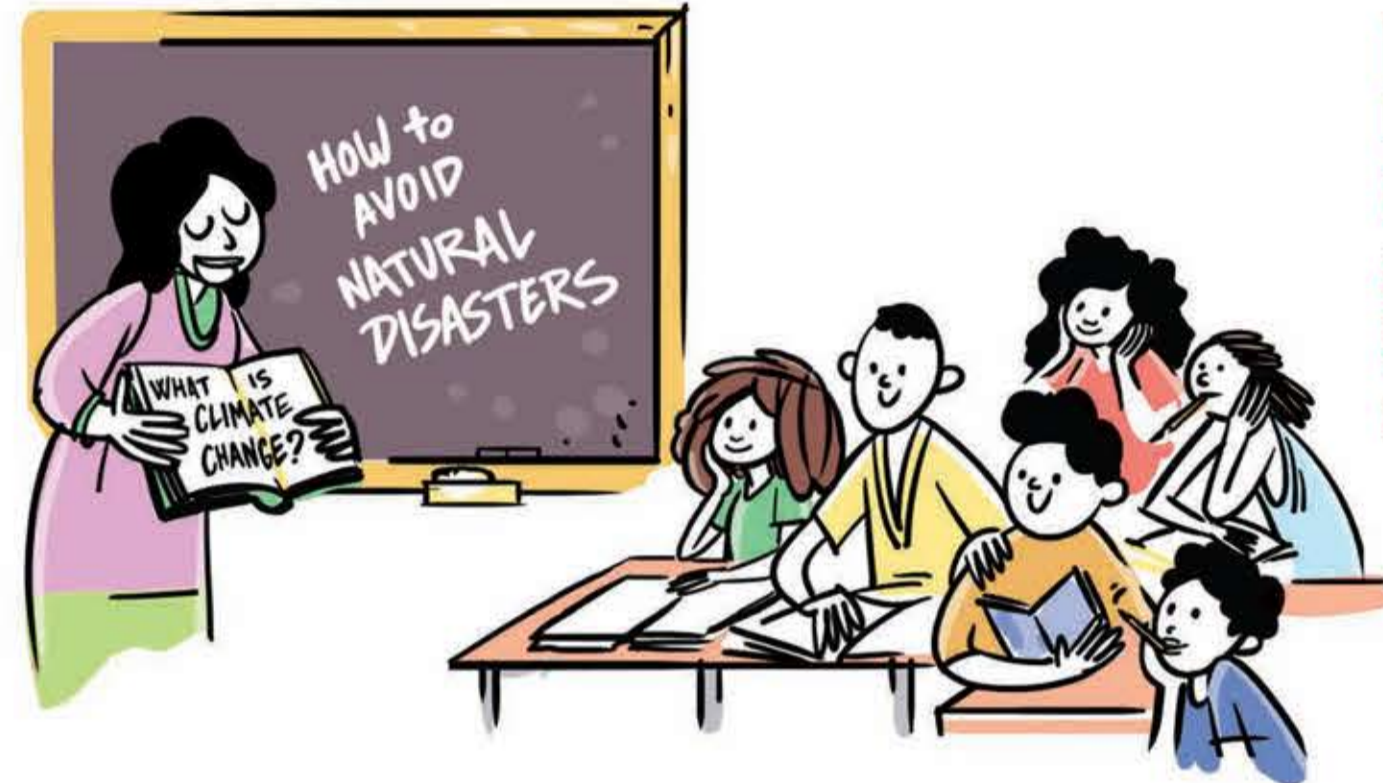
ADOPT CLEANER ENERGY to reduce indoor and outdoor air pollution and save millions of lives



Challenges

Solutions

103 MILLION youth worldwide **LACK BASIC LITERACY SKILLS**. More than **60%** are **WOMEN**



PROMOTE EDUCATION FOR ALL as a powerful tool to build sustainable and resilient societies

LACK OF ACCESS TO BASIC SERVICES such as water and electricity prevent children, especially **GIRLS**, from going to school



IMPROVE ACCESS TO BASIC SERVICES to free children's time so that they can go to school.

NATURAL DISASTERS such as floods and droughts can lead to children dropping **OUT OF SCHOOL** for extended period of time



BUILD RESILIENCE to ensure children can go to school at all time, including during extreme climate events



Challenges

WOMEN are amongst the most vulnerable to **ENVIRONMENTAL DEGRADATION** and are particularly affected by **CLIMATE CHANGE** impacts

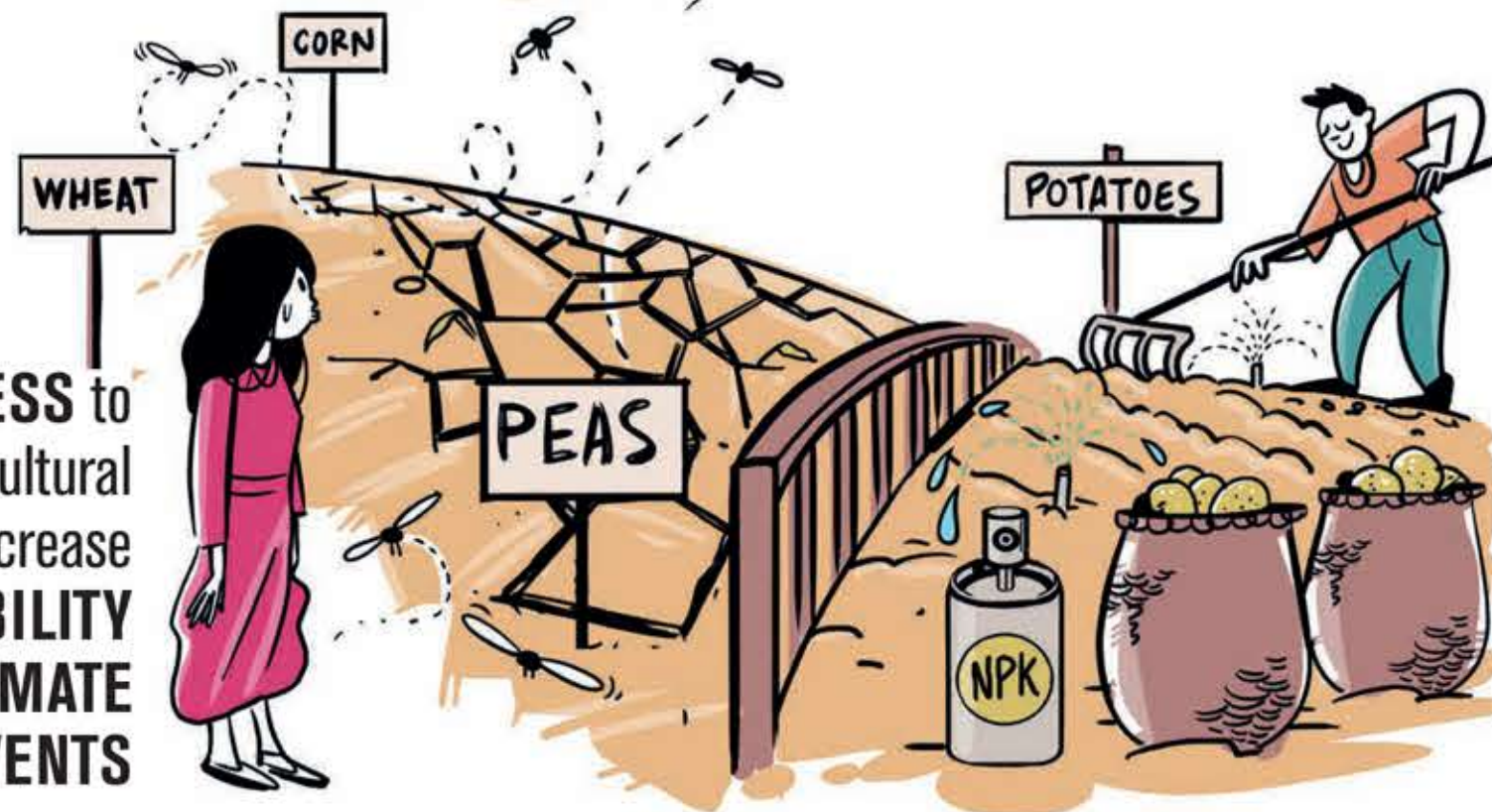


Solutions

Recognize the important role played by women as **CUSTODIANS OF BIODIVERSITY AND COMMUNITIES' WELL-BEING**



LACK OF ACCESS to land, credits, agricultural inputs, and markets increase women's **VULNERABILITY TO EXTREME CLIMATE EVENTS**



SUPPORT EQUAL ACCESS to land, agricultural inputs, financial services and education **FOR WOMEN** to build a more sustainable future for themselves, their family and community



Women are subject to **CULTURAL, LEGAL, POLITICAL AND FINANCIAL BIAS** preventing them from building their resilience



Put in place **GENDER FRIENDLY LAWS** and **INSTIL A CULTURE OF EQUALITY EMPOWERING** women to become powerful agents of change





Challenges

UNSAFE WATER, INADEQUATE SANITATION and INSUFFICIENT HYGIENE kill 3.5 million people every year



80% of **WASTEWATER** is released the environment **UNTREATED**. Degrade the environment and you destroy **NATURE'S ABILITY TO PROVIDE SAFE DRINKING WATER**



WATER SCARCITY affects more than 40% of the global population



Solutions

STOP DUMPING CHEMICALS AND WASTE into the environment, **INVEST IN SANITATION** and **RAISE AWARENESS** on best hygiene practices



PROTECT NATURAL RESOURCES and avoid water pollution



RESTORE ECOSYSTEMS to secure access to safe water





Challenges

Solutions

ONE IN FIVE PEOPLE STILL LACK ACCESS TO MODERN ELECTRICITY and three billion people rely on wood, charcoal or animal waste for cooking and eating



Ensure everyone has access to **CLEAN, AFFORDABLE, RELIABLE** and **MODERN ENERGY**

Every year **INDOOR AIR POLLUTION** kills 4.3 million people – most of them women and children



Invest in **RENEWABLE ENERGY** and disseminate its use

Energy provided by **FOSSIL FUELS** is the **MAIN CONTRIBUTOR OF CLIMATE CHANGE** representing 60% of all greenhouse gas



Put in place **ENERGY SAVING POLICIES**



Challenges

UNEMPLOYMENT is on the rise around the world



Roughly **HALF OF THE WORLD** population still lives on **\$2 PER DAY**



Some economic activities directly or indirectly **HARM THE ENVIRONMENT**



Solutions

PROVIDE EMPLOYMENT OPPORTUNITIES AND DECENT WORK for women and men to eradicate poverty



CREATE GREEN JOBS to provide work for the 470 million who will be entering the labour market by 2030



PROMOTE GREEN GROWTH AND JOBS contributing to restoring and protecting the environment and natural resources





Challenges

Solutions

Many countries **LACK BASIC and RESILIENT INFRASTRUCTURE**



INVEST IN INFRASTRUCTURE fostering sustainable growth and development

Poor infrastructure is a major **BARRIER FOR THRIVING BUSINESSES**



INNOVATE to make **GREEN INFRASTRUCTURE**, increase **ENERGY EFFICIENCY** and reduce their adverse environmental impact

Infrastructure and industrialization often cause **ENVIRONMENTAL DEGRADATION**



BUILD RESILIENT INFRASTRUCTURE protecting livelihoods against environmental and natural disasters



Challenges

EXPLOITATION OF NATURAL RESOURCES is a contributor to **INEQUALITY** fueling **CONFLICTS** worldwide



Solutions



INVEST IN SOUND AND FAIR MANAGEMENT OF NATURAL RESOURCES to reduce inequalities

CLIMATE CHANGE AND DISASTERS have a dire impact on the poorest and vulnerable groups and contribute to **EXACERBATE EXISTING INEQUALITIES** within and across countries



PROMOTE INSTITUTIONAL ARRANGEMENTS providing **EQUAL AND FAIR ACCESS AND USE** of natural resources

NATURAL DISASTERS AND ENVIRONMENTAL DEGRADATION INCREASE LEVELS OF DISPLACEMENT worldwide. Since 2008, around **22.5 MILLION PEOPLE** have been displaced by climate or weather related hazards



PROTECT THE ENVIRONMENT, ADAPT AND FIGHT CLIMATE CHANGE to reduce inequalities, conflicts and forced migration worldwide



Challenges

The **RAPID** and often **UNPLANNED URBANIZATION** witnessed worldwide has led to **INCREASED PRESSURE ON THE ENVIRONMENT**



Our cities account for up to **80% OF ENERGY CONSUMPTION** as well as **75% OF GLOBAL WASTE AND CARBON EMISSIONS**



Due to the high concentration of people, infrastructure, housing and economic activities, **CITIES ARE PARTICULARLY VULNERABLE** to climate change and natural disasters



Solutions

PROMOTE SOUND URBAN PLANNING, sustainable building, low-carbon transports, green spaces and sustainable lifestyles



INVEST IN RENEWABLE ENERGY, waste management, sustainable and green infrastructure



PROTECT CITIES - which are important social, cultural and economic centres - from environmental and climate threats



Challenges

Every year about **ONE THIRD OF ALL FOOD PRODUCED** – equivalent to 1.3 billion tones – **IS WASTED** while 1 billion people remain undernourished and another 1 billion go to bed hungry

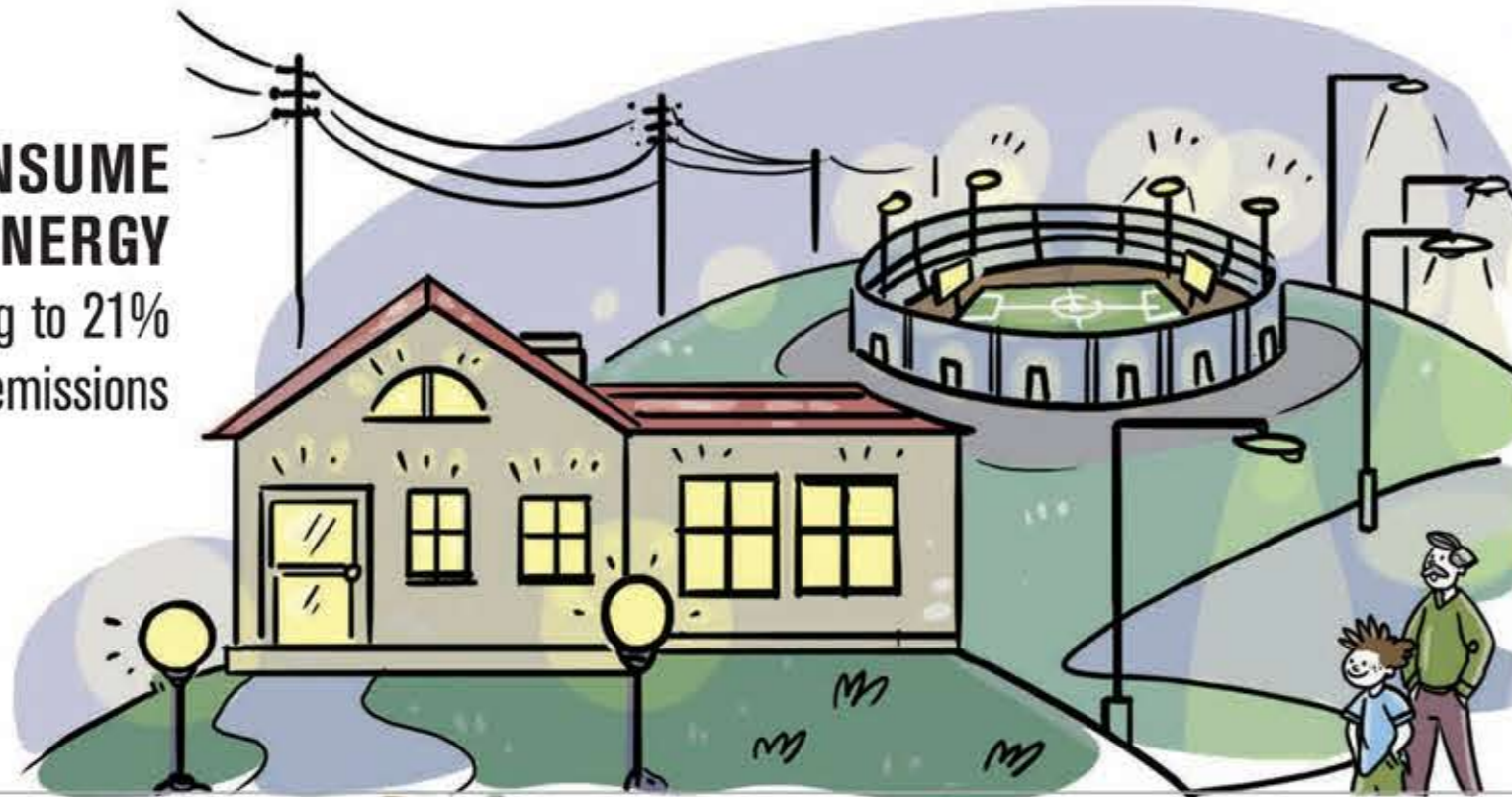


Solutions

REDUCE THE FOOD WASTED by producers, retailers and consumers



HOUSEHOLDS CONSUME 29% OF GLOBAL ENERGY contributing to 21% of CO₂ emissions



SWITCH TO ENERGY EFFICIENT LIGHTING to save \$120 billion every year and prevent 16 billion tons of carbon emissions over the next 25 years



The world's **FRESH WATER SUPPLY** such as rivers and lakes **ARE POLLUTED** at much faster rate than nature can recycle and purify



REDUCE THE RELEASE OF CHEMICALS AND WASTE into the air, water and soil





Challenges

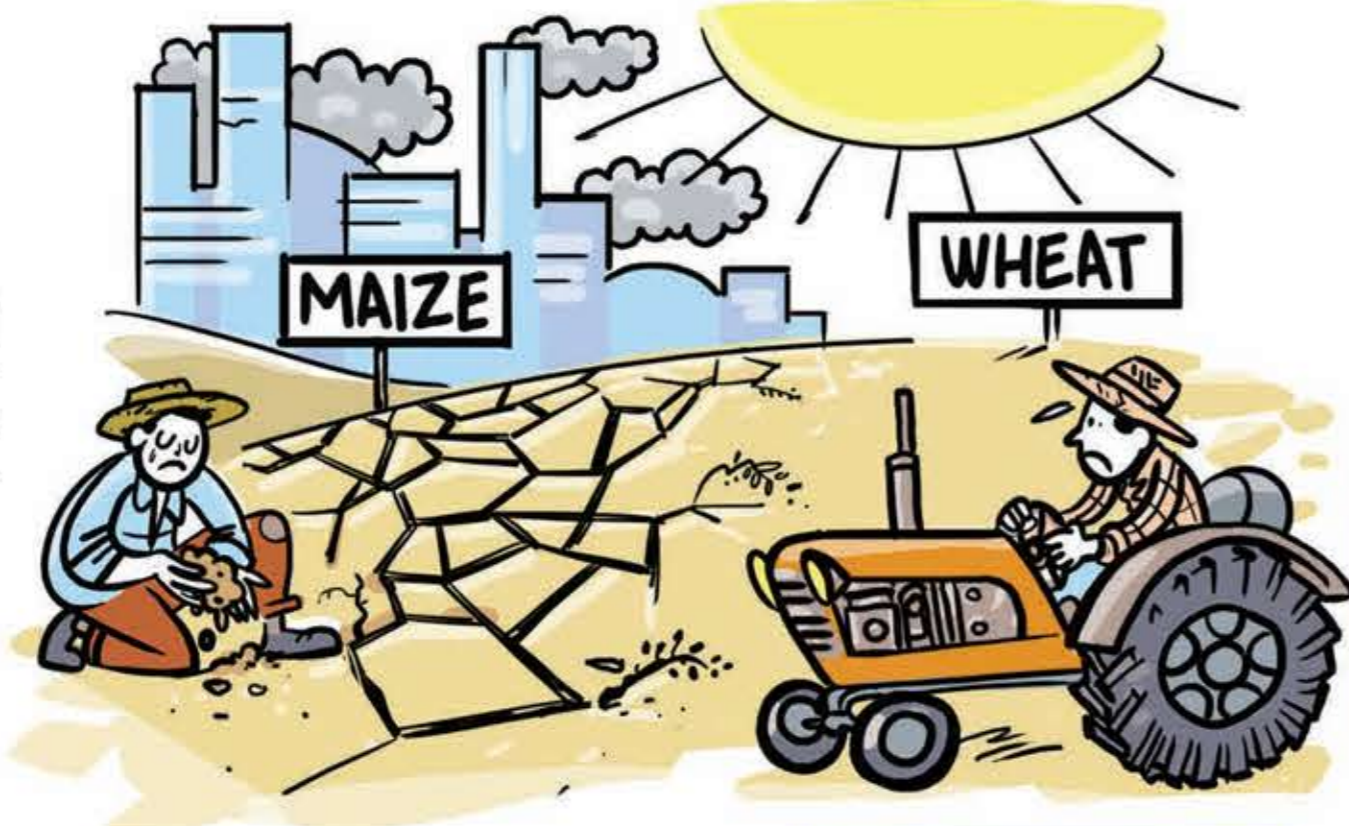
Solutions

ANTHROPOGENIC GREENHOUSE GAS EMISSIONS have increased since the pre-industrial era, driven largely by **ECONOMIC AND POPULATION GROWTH**, and are now higher than ever.



Inform and inspire people and institutions to **TAKE ACTIONS AGAINST CLIMATE CHANGE**

THE WORLD IS WARMING at an alarming rate, damaging our ability to grow food



Innovate and adopt technological solutions to **MITIGATE AND ADAPT TO CLIMATE CHANGE**

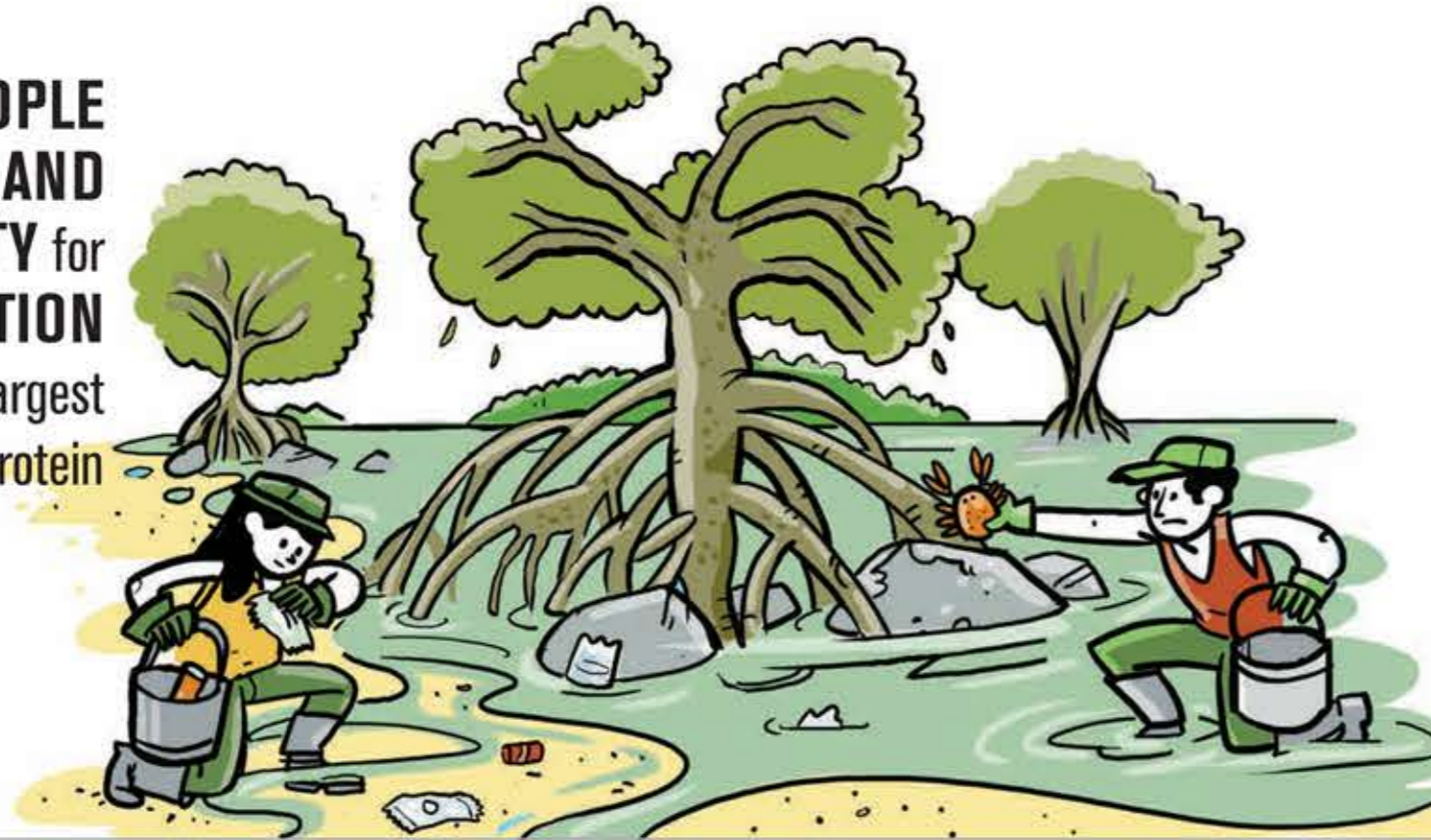
STORMS, FLOODS, HURRICANES AND DROUGHTS are intensifying, oceans are warming and becoming more acid, ice is disappearing and seas are rising.



PROTECT THE MOST VULNERABLE against climate change impacts

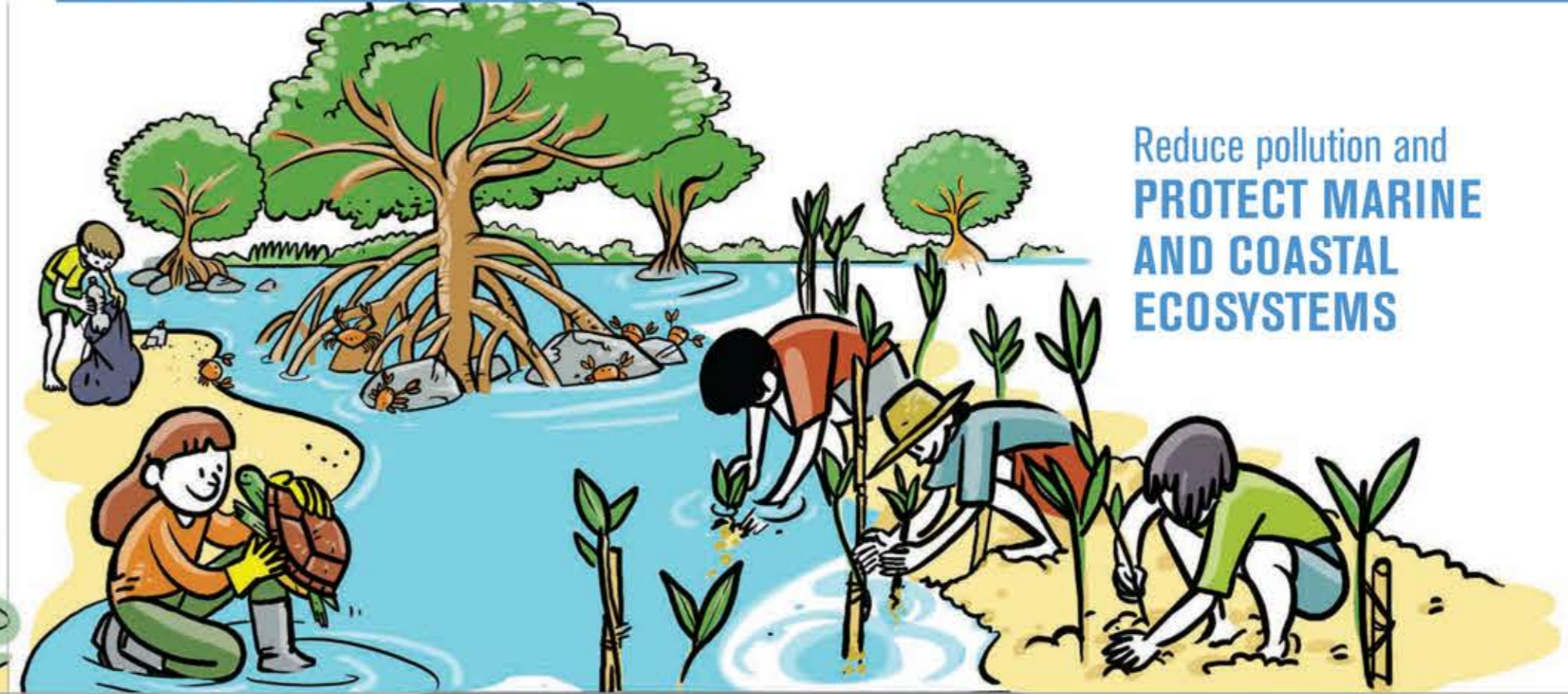
Challenges

Over **THREE BILLION PEOPLE** depend on **MARINE AND COASTAL BIODIVERSITY** for their livelihoods. **POLLUTION THREATENS** the world's largest source of protein



Solutions

Reduce pollution and **PROTECT MARINE AND COASTAL ECOSYSTEMS**



40% OF WORLD'S OCEANS suffer from **OVERFISHING, POOR FISHING PRACTICES** and **POOR WASTE MANAGEMENT**



END HARMFUL FISHING SUBSIDIES and stop unreported, unregulated and destructive fishing practices

CORAL REEFS which provides a home to 25% of all marine life **ARE BEING DESTROYED** at an alarming rate

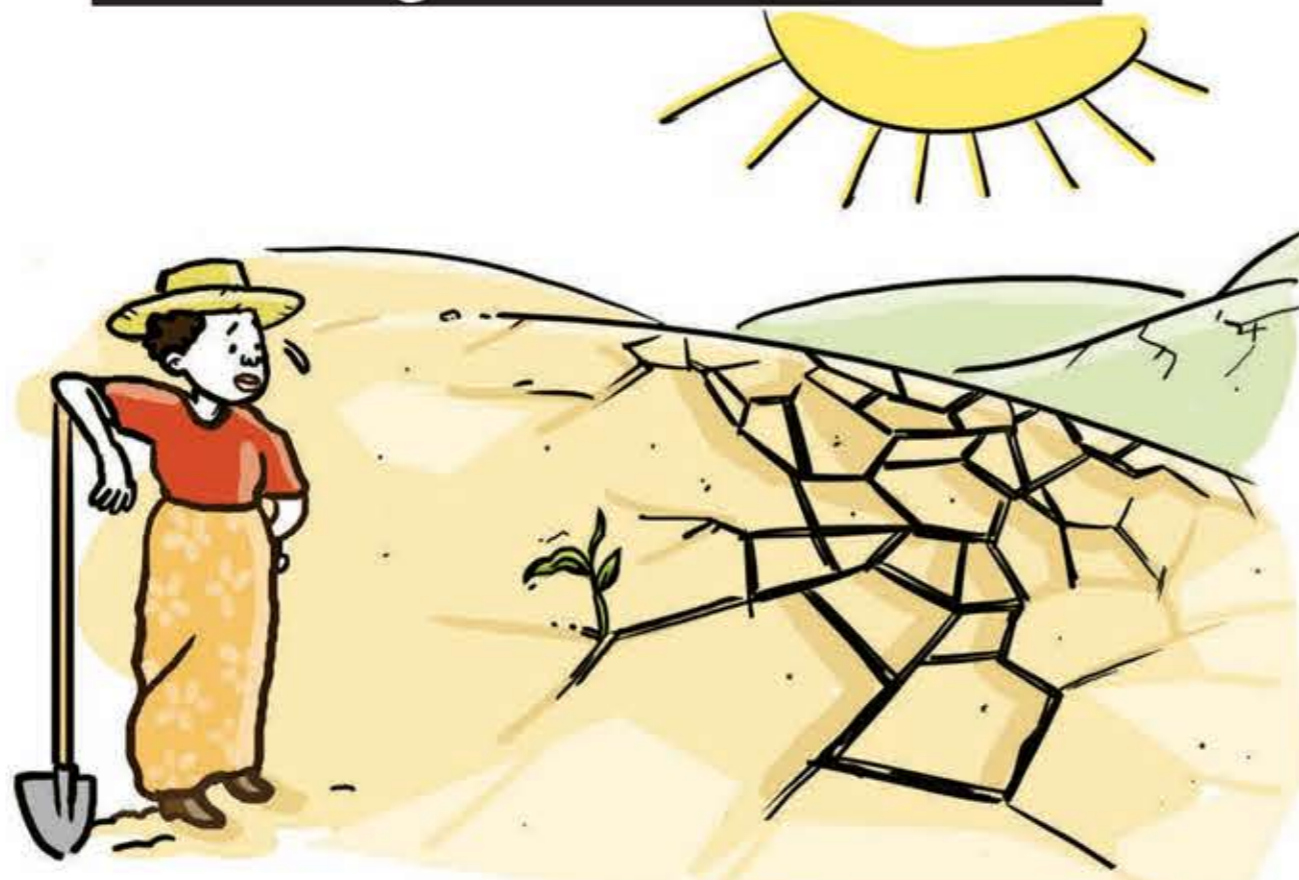


FIGHT CLIMATE CHANGE, reduce sedimentation, stop coral mining and promote sustainable tourism



Challenges

EVERY MINUTE 23 HECTARES OF ARABLE LAND ARE LOST to drought and desertification



Solutions



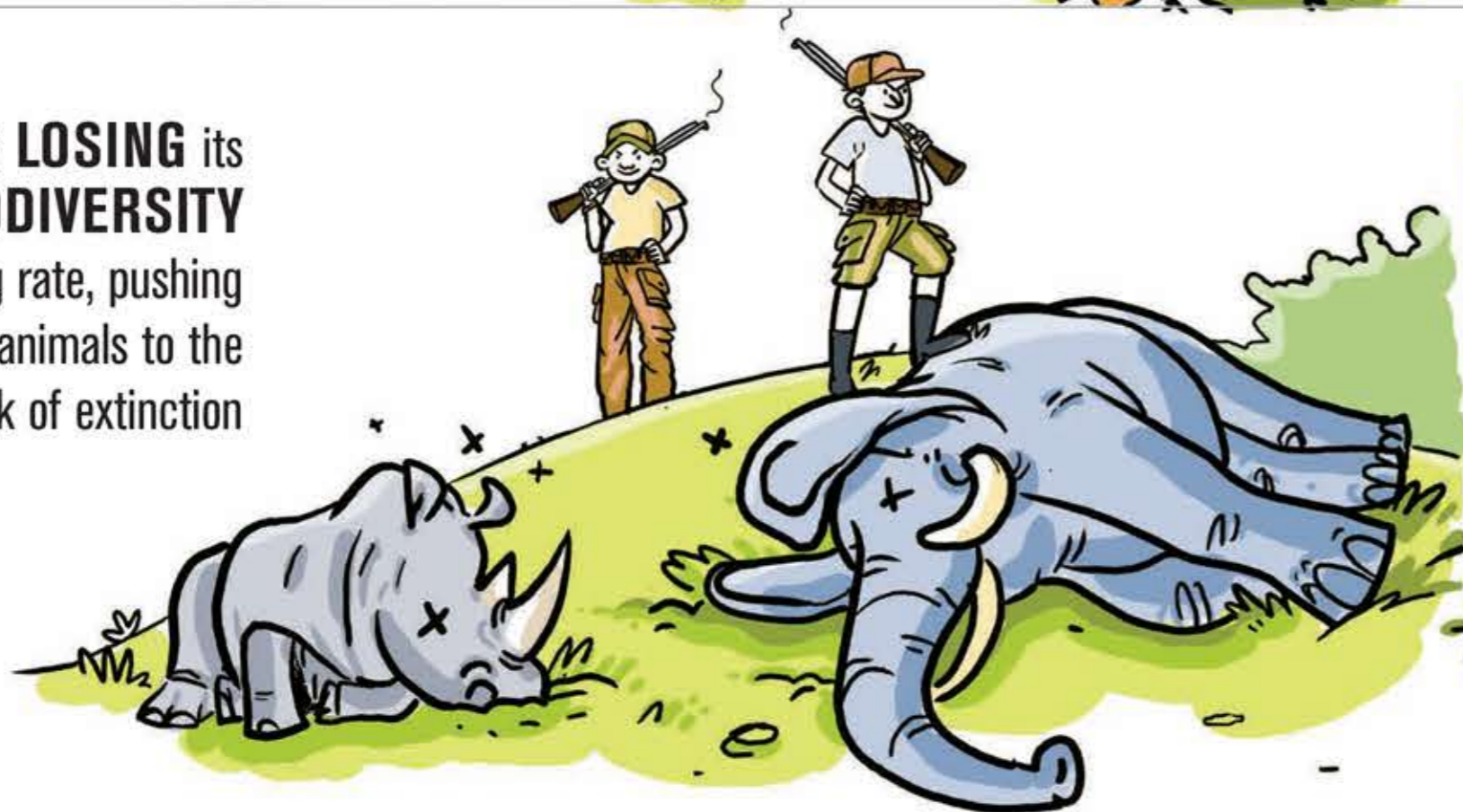
COMBAT DESERTIFICATION, and restore degraded land and soil

EVERY YEAR WE LOSE 13 MILLION HECTARES OF FOREST that are home to more than 80% of all land-based species and provide livelihood to 1.6 billion people



HALT DEFORESTATION and restore degraded forests to PROTECT HABITATS

The WORLD IS LOSING its PRECIOUS BIODIVERSITY at an alarming rate, pushing 22% of animals to the brink of extinction



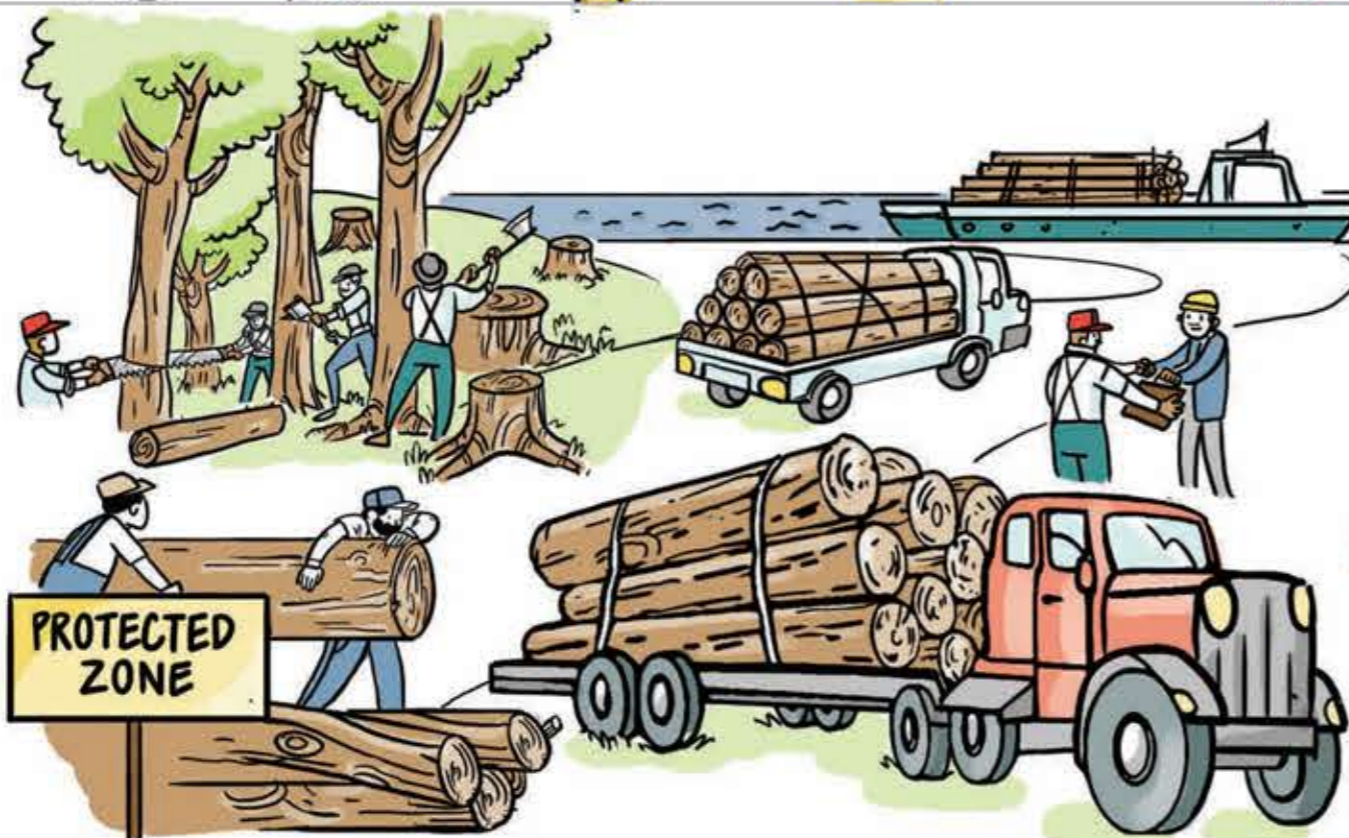
Take urgent action to END POACHING AND TRAFFICKING of protected species

Challenges

Illegal logging, waste trafficking, corruption and bribery, plundering, exploitation of natural resources and poaching are examples of **GOVERNANCE AND ENFORCEMENT FAILURES**



ILLEGAL TRADE IN ANIMALS AND PLANTS - including **TIMBER AND CHARCOAL** - is a large source of **CRIMINAL EARNINGS** in the world, estimated to be worth \$50 to \$150 billion per year



Revenues generated by **ENVIRONMENTAL CRIMES** enrich international criminal cartels and **FUEL CONFLICTS** across the world



Solutions



STOP all forms of **ENVIRONMENTAL CRIMES**



DEVELOP EFFECTIVE, ACCOUNTABLE AND TRANSPARENT INSTITUTIONS at all levels



PROVIDE ALTERNATIVE LIVELIHOODS to those at the bottom of the criminal chain



Partnership for the goals

Build strong partnerships for sustainable development by mobilizing resources, sharing knowledge, promoting the creation and transfer of environmentally sound technologies, building capacities and tracking progress

